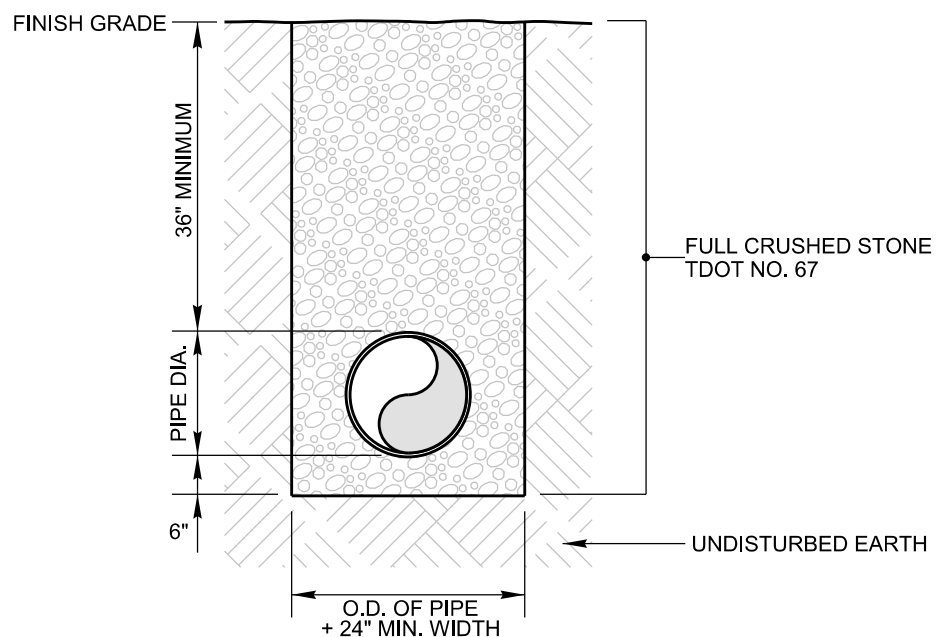



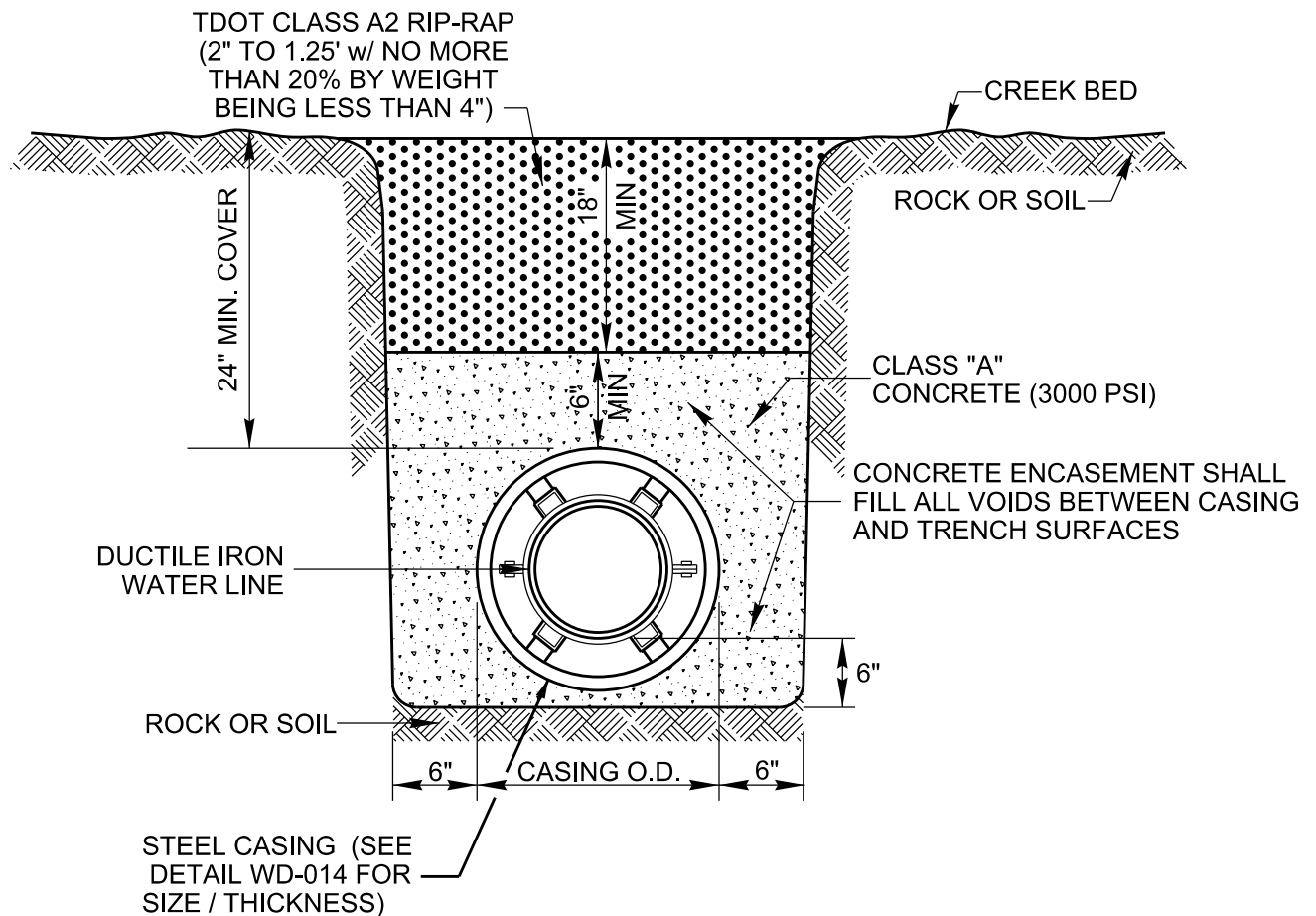
PIPE IN EASEMENT AREAS



PIPE IN PAVED AREAS, ROADWAYS, OR PARKING AREAS

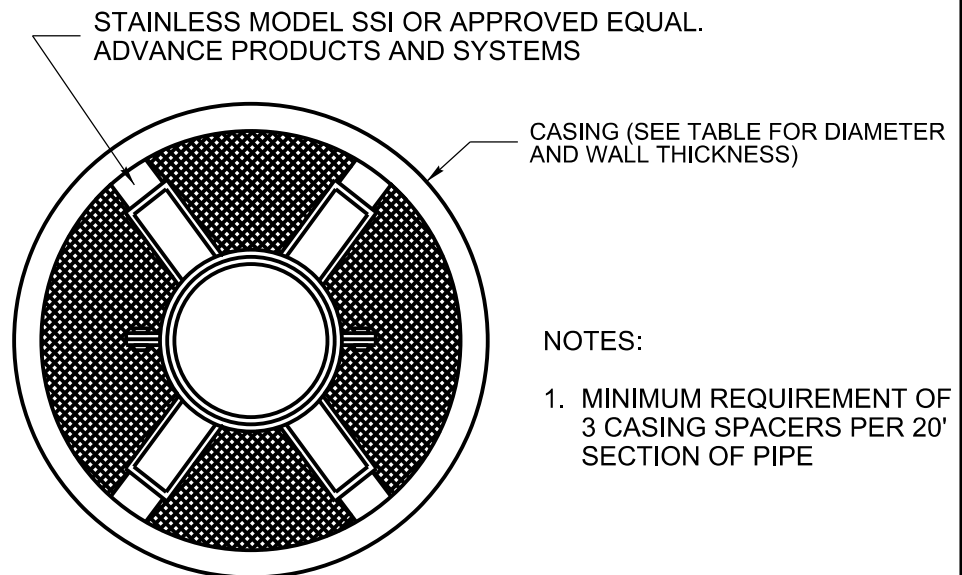
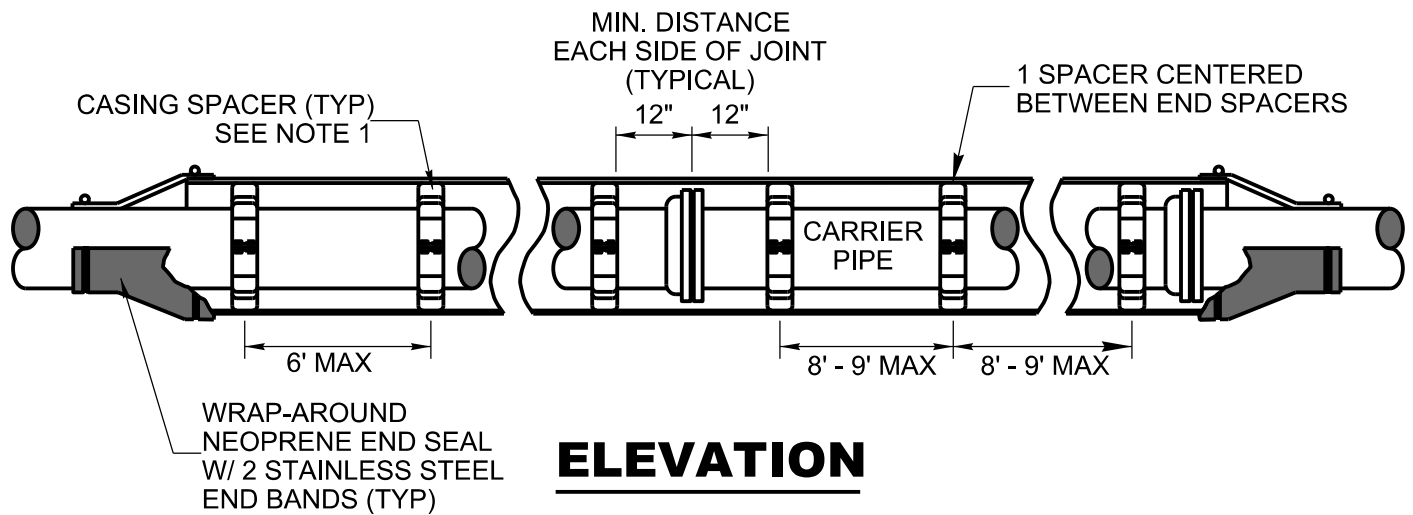
NOT TO SCALE

REVISIONS	DATE	TRENCH DETAILS	
		 LaGuardo UTILITY DISTRICT LEBANON, TENNESSEE	DRAWING NUMBER WD-012
			DATE: 09/27/2019



NOT TO SCALE

REVISIONS	DATE	WATERLINE STREAM CROSSING	
		 LaGuardo UTILITY DISTRICT LEBANON, TENNESSEE	DRAWING NUMBER WD-013 DATE: 09/27/2019




SECTION

CARRIER PIPE DIAMETER	CASING PIPE DIAMETER	NOMINAL WALL THICKNESS
4"	8"	0.25"
6"	12"	0.25"
8"	16"	0.312"
10"	20"	0.375"
12"	22"	0.375"

NOTE:
CASING FOR BORE APPLICATIONS SHALL BE BITUMINOUS ASPHALT COATED.

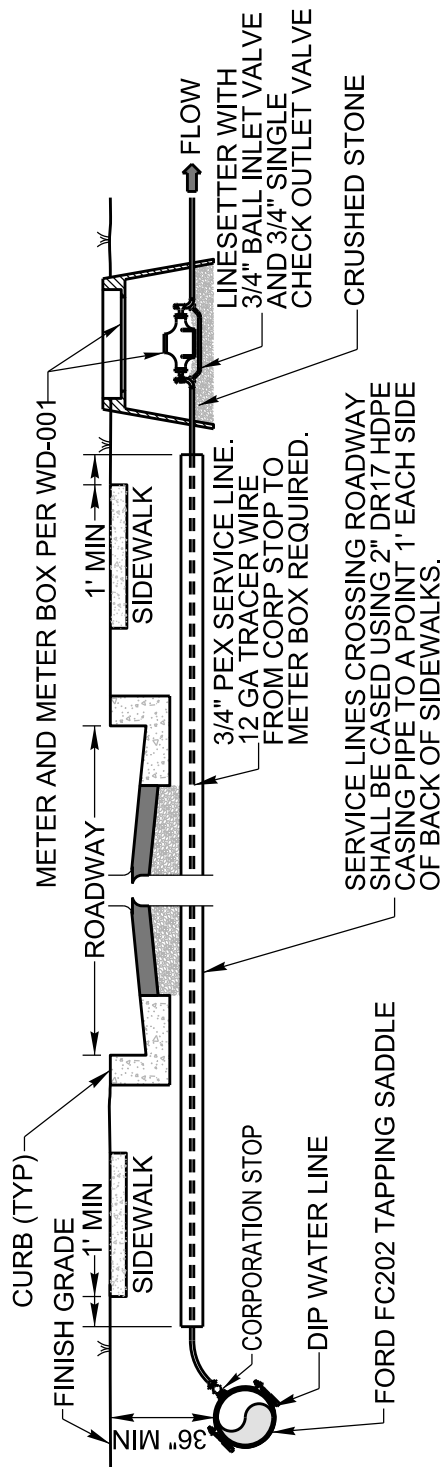
NOT TO SCALE

REVISIONS	DATE	CASING AND CASING SPACER DETAIL	
		 LaGuardo UTILITY DISTRICT LEBANON, TENNESSEE	DRAWING NUMBER WD-014
			DATE: 09/27/2019

NOTES:

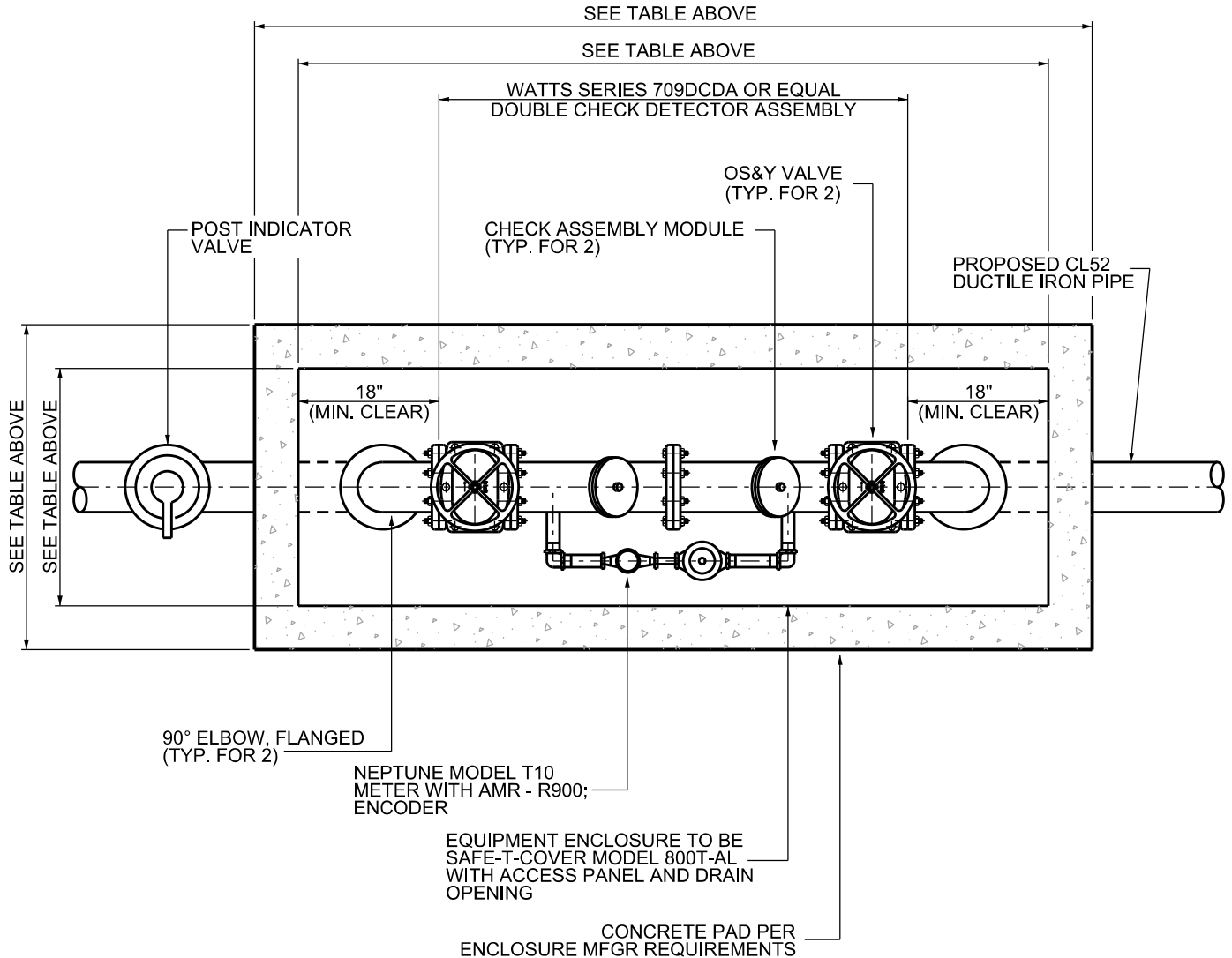
1. WATER MAIN CASING MUST EXTEND FROM TOE OF SLOPE TO TOE OF SLOPE.
2. DITCH CROSSING - CASING MUST BE MINIMUM 24" BELOW BOTTOM OF DITCH.
3. ALL 2" CASING PIPE NEEDS TO BE DUCT TAPED ON THE ENDS.
4. 2" CASING SHOULD RUN FROM 2' OFF WATER MAIN TO 2' OFF METER BOX, BUT UNDER NO CIRCUMSTANCES END UNDER THE ROAD, SIDEWALK OR ANY OTHER SURFACE BARRIER.

NOT TO SCALE




REVISIONS		DATE	WATER SERVICE LINE CASING DETAIL	
			 LaGuardo UTILITY DISTRICT LEBANON, TENNESSEE	DRAWING NUMBER WD-015
				DATE: 09/27/2019

ENCLOSURE AND CONCRETE PAD DIMENSIONS					
	ENCLOSURE			CONCRETE PAD	
MODEL	LENGTH	WIDTH	HEIGHT	LENGTH	WIDTH
400T	7'-2"	2'-2"	4'-6"	8'-4"	3'-4"
600T	8'-4"	3'-0"	5'-4"	9'-6"	4'-2"
800T	10'-0"	3'-2"	6'-8"	11'-2"	4'-4"

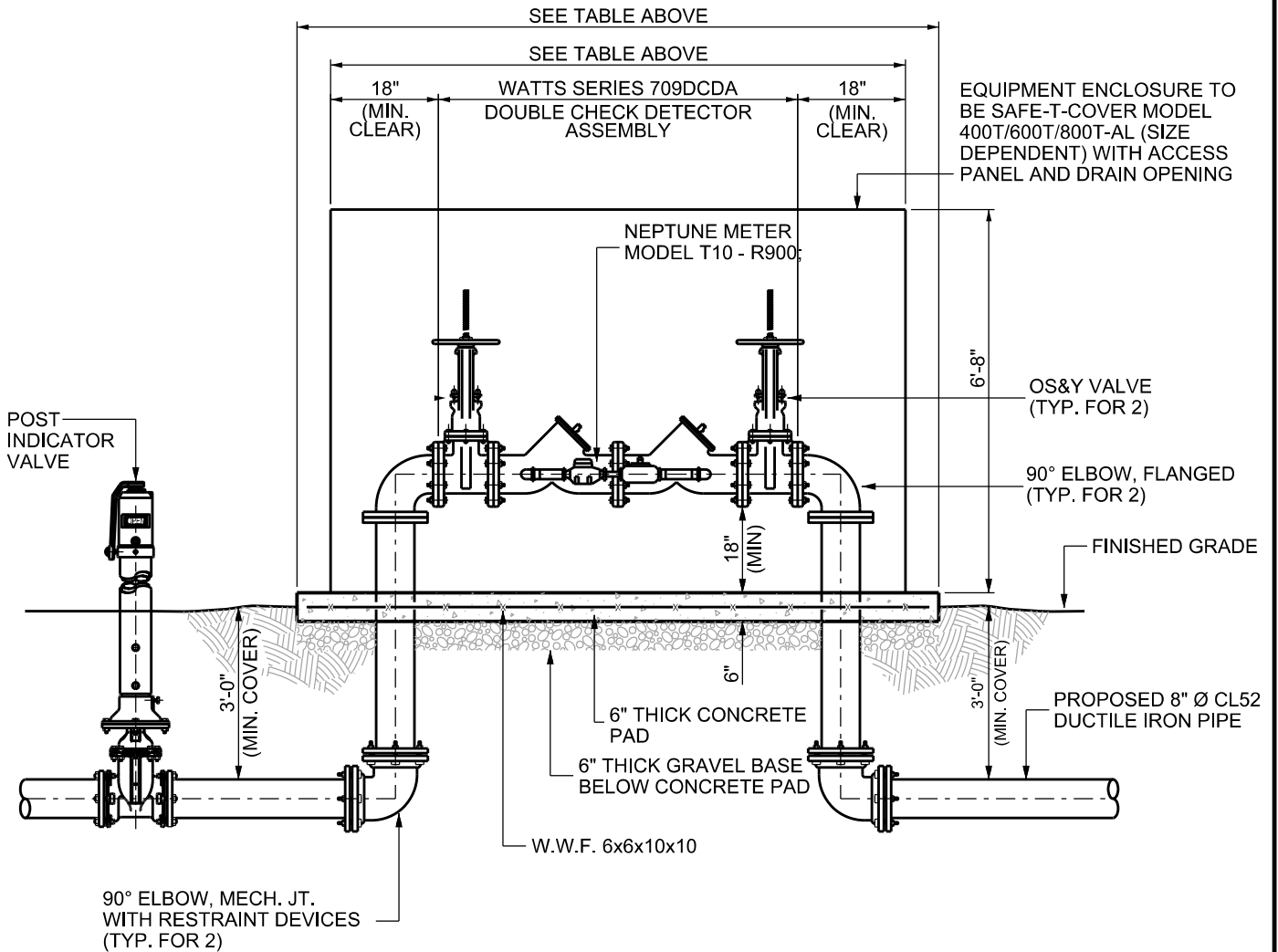


NOTE:
1. DCDA BACKFLOW PREVENTOR DEVICES ARE ALLOWED ONLY ON SERVICES THAT FEED A CLASS 1-3 FIRE LINE.

NOT TO SCALE

REVISIONS	DATE	DOUBLE CHECK DETECTOR BACKFLOW ASSEMBLY WITH COVER (PLAN)	
		 LaGuardo UTILITY DISTRICT LEBANON, TENNESSEE	DRAWING NUMBER WD-016A
			DATE: 09/27/2019


ENCLOSURE AND CONCRETE PAD DIMENSIONS					
	ENCLOSURE			CONCRETE PAD	
MODEL	LENGTH	WIDTH	HEIGHT	LENGTH	WIDTH
400T	7'-2"	2'-2"	4'-6"	8'-4"	3'-4"
600T	8'-4"	3'-0"	5'-4"	9'-6"	4'-2"
800T	10'-0"	3'-2"	6'-8"	11'-2"	4'-4"

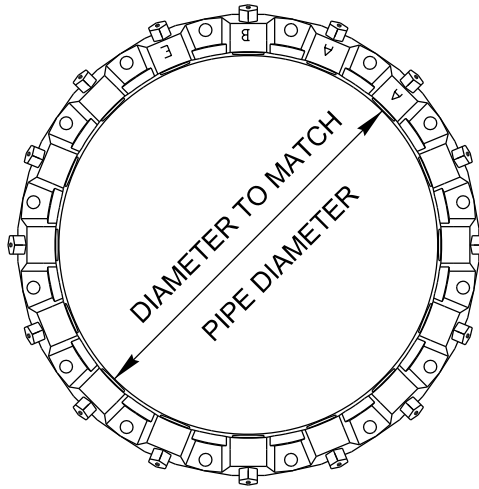
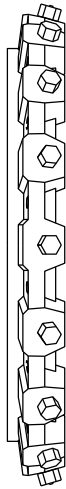


NOTE:

1. PROVIDE ADEQUATE SUPPORTS UNDER DEVICE AS NECESSARY IN ORDER TO PREVENT SAGGING.
2. DCDA BACKFLOW PREVENTOR DEVICES ARE ALLOWED ONLY ON SERVICES THAT FEED A CLASS 1-3 FIRE LINE.

NOT TO SCALE


REVISIONS	DATE	DOUBLE CHECK DETECTOR BACKFLOW ASSEMBLY WITH COVER (SECTION)	
		 LaGuardo UTILITY DISTRICT LEBANON, TENNESSEE	DRAWING NUMBER WD-016B
			DATE: 09/27/2019

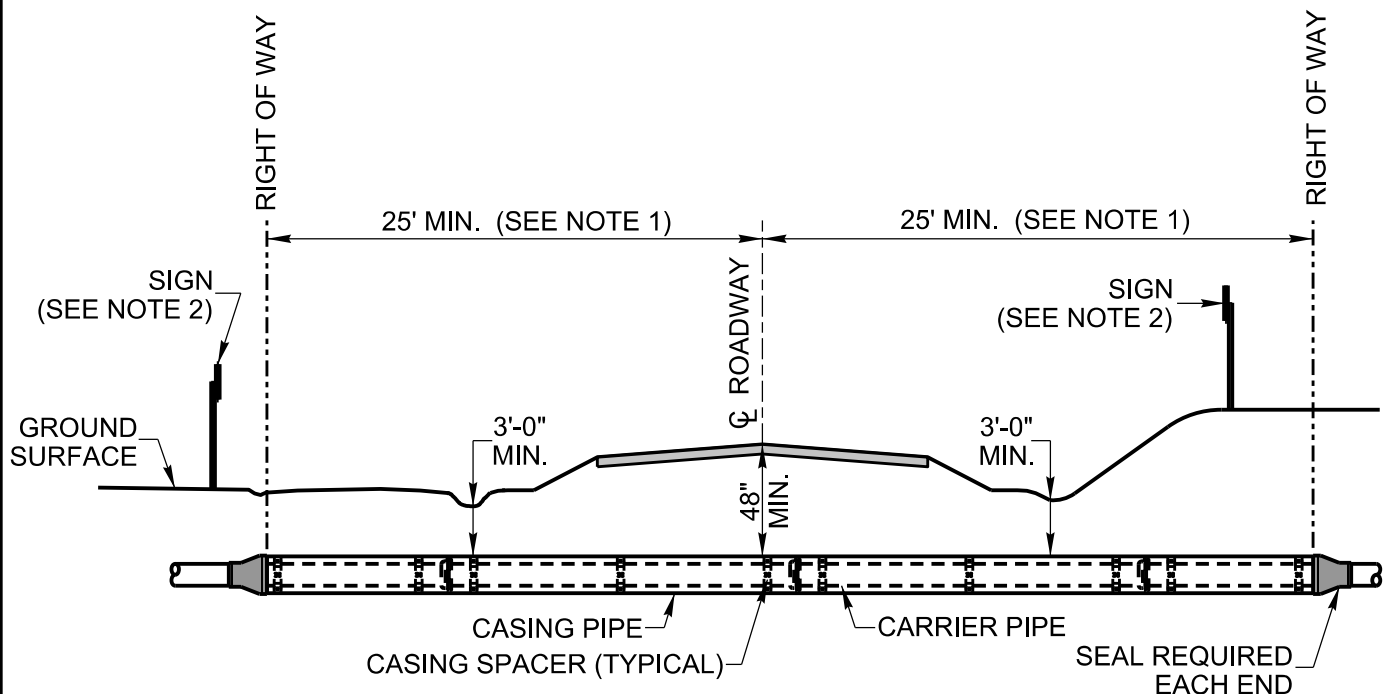


NOTES AND REQUIREMENTS:

1. CERTIFIED FOR USE ON DUCTILE IRON PIPE
2. UNDERWRITER LABORATORY LISTED
3. 250 PSI RATING
4. 1100 SERIES MEGALUG EBAA IRON OR EQUAL
5. INSTALL PER MANUFACTURER INSTRUCTIONS
6. INSTALL AT EACH FITTING (HORIZONTAL AND VERTICAL)

NOT TO SCALE


REVISIONS	DATE	<h1>MEGALUG DETAIL</h1>	
			DRAWING NUMBER WD-017
			DATE: 09/27/2019

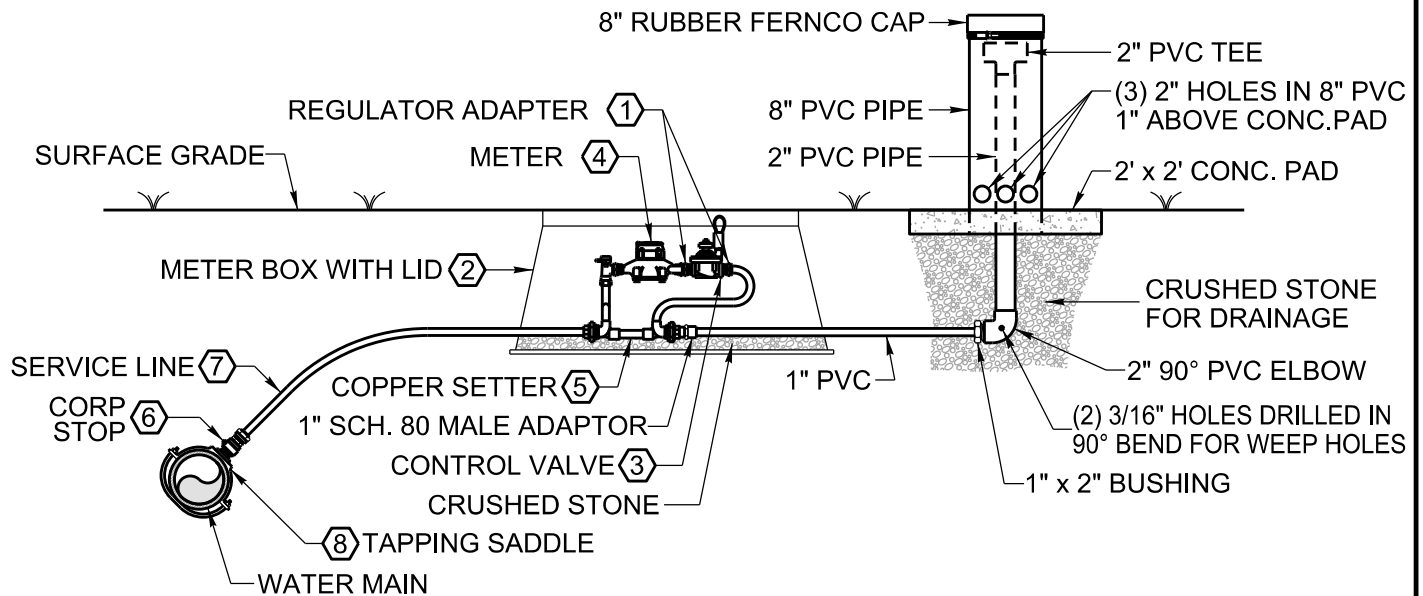


NOTES:

1. CASING SHALL EXTEND TO THE GREATER OF THE FOLLOWING DISTANCES:
 - A. 2' BEYOND TOE OF SLOPE
 - B. 5' BEYOND CENTERLINE OF DITCH
 - C. OUTSIDE EDGES OF RIGHT OF WAY
2. SIGN TO INDICATE LOCATION OF PIPE LINE AT R.O.W. LINE, KIND, OWNERSHIP, AND DEPTH OF PIPE LINE.
3. SEE DETAIL WD-14 FOR CASING SPACERS AND CASING DETAIL.

NOT TO SCALE

REVISIONS	DATE	PIPE LINE CROSSING UNDER ROADWAY (FOR WATER LINES)	
		 LaGuardo UTILITY DISTRICT LEBANON, TENNESSEE	DRAWING NUMBER WD-018 DATE: 09/27/2019



COMPONENT LISTING

NO.	DESCRIPTION	MFGR OR CATALOG NO.
①	REGULATOR ADAPTER	FORD RA-4-NL
②	METER BOX	CARSON 1730-18 WITH CARSON PLASTIC LID WITH FLIP READER
③	CONTROL VALVE	1" HUNTER ICV-101-G (1" GLOBE VALVE, NPT THREADS, 220 PSI RATED) WITH HUNTER NODE-100 TIMING NODE
④	METER	1" NEPTUNE T-10 WITH ECODER R900i REGISTER AND 6' THROUGH THE LID ANTENNA
⑤	COPPER SETTER	FORD 2-TVBH74-12WR-41-44-Q-NL
⑥	CORPORATION STOP	FORD FB-1000
⑦	1" SERVICE LINE	1" REHAU MUNICIPEX
⑧	TAPPING SADDLE	CLASS 200 PVC PIPE: FORD S-70, C900 PVC PIPE: S-90, DI PIPE: FORD FC-202

NOT TO SCALE

REVISIONS

DATE

AUTO FLUSHER DETAIL



DRAWING NUMBER

WD-020

DATE: 07/13/2021