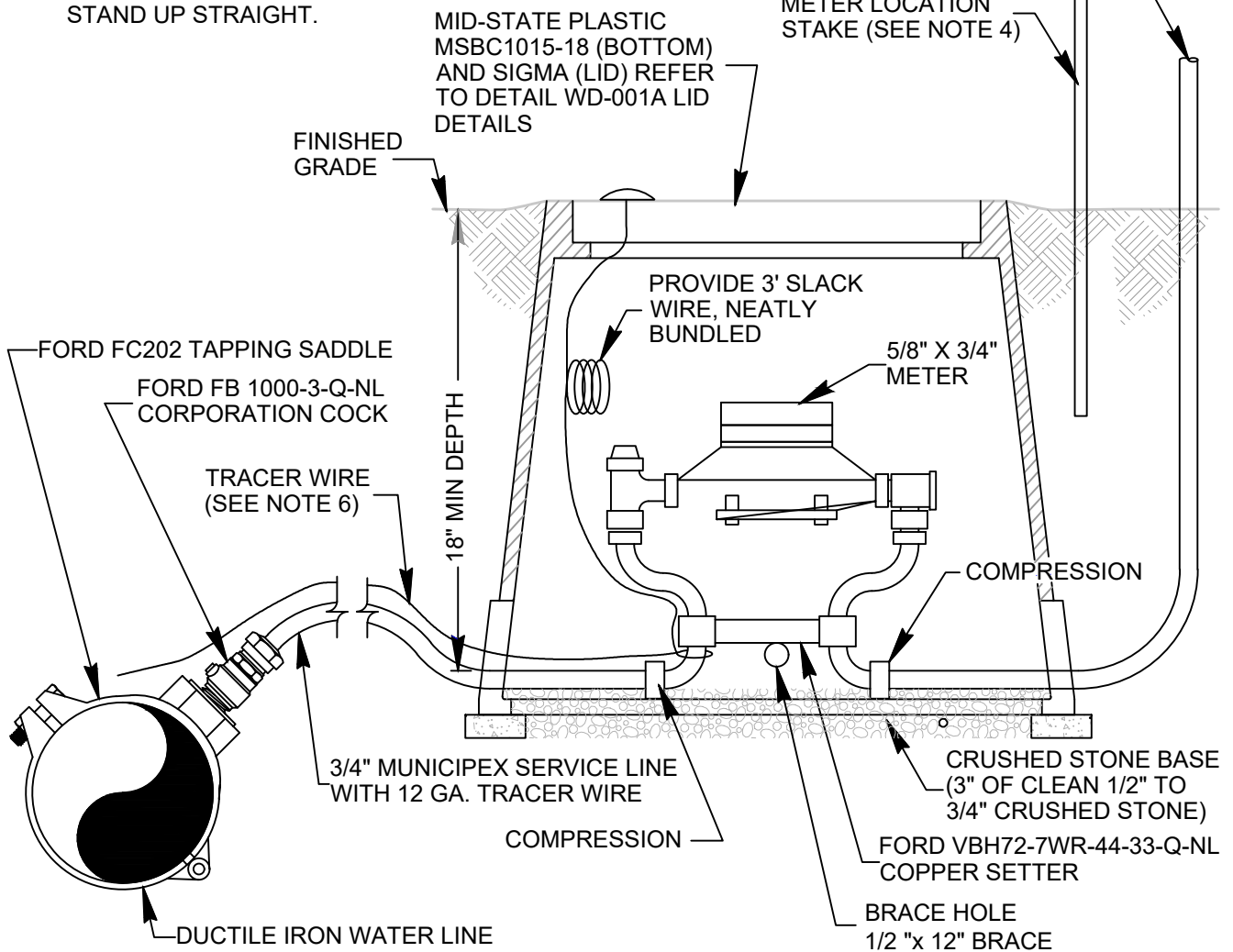


NOTES:

1. USE SADDLE FOR TAPS INTO ALL DIP PIPES.
2. USE SADDLE FOR TAPS INTO EXISTING PVC PIPE.
3. WATER METER SHALL BE SUPPLIED BY THE DISTRICT.
4. METER BOX MUST BE MARKED WITH A STAKE THAT STANDS NO LESS THAN 4' TALL PAINTED BLUE.
5. METER SETTERS MUST HAVE " PVC 1/2 BRACE 1 FOOT LONG INSTALLED IN SETTER SO THAT SETTER WILL STAND UP STRAIGHT.
6. ALL TRACER WIRE NEEDS TO BE RAN INTO METER BOXES & WRAPPED AROUND BOTTOM OF SETTER WITH ENOUGH SLACK TO COME OUT OF TOP OF BOX.
7. ALL METER SETTERS NEED 5 FOOT PIECE OF PEX INSTALLED ON OUTLET SIDE OF SETTER & LET PIPE COME TO ABOVE TOP OF GROUND WHEN BACKFILLED.
5' STUB OUT SERVICE ABOVE GRADE.



REVISIONS	DATE
MODIFY LID INFO	7/2021

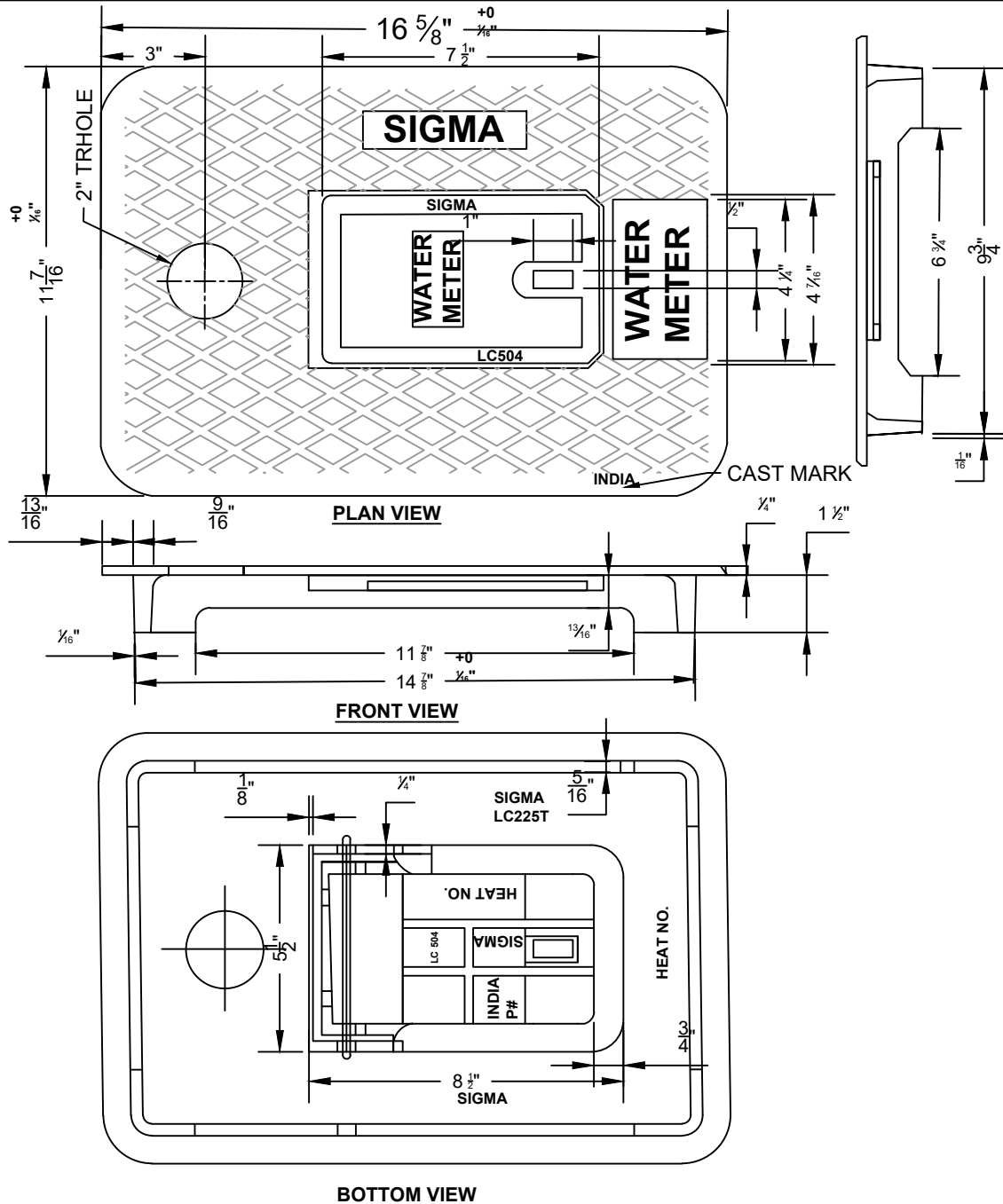
3/4" DOMESTIC METER ASSEMBLY



DRAWING NUMBER

WD-001

DATE: 09/27/2019



NOTES

1. ALL THE DIMENSIONS ARE IN INCHES. METRIC UNITS ARE PARENTHESIS.
2. MATERIAL: CAST IRON ASTM A48 CLASS 30B.
3. TOLERANCE SHOULD BE $\pm 0.0625"$, UNLESS OTHERWISE SPECIFIED.
4. REFER SIGMA QIP DOC.NO : QA/QIP/MCC FOR MANUFACTURING AND INSPECTION PROCEDURE.

REVISIONS	DATE

3/4" DOMESTIC METER ASSEMBLY



DRAWING NUMBER
WD-001A
 DATE: 09/27/2019

2" METER GENERAL NOTE

CONTRACTOR SHALL PAY THE FEE COST OF ALL THE NEW 2-INCH METERS. METER FEE SHALL BE PAID TO LAGUARDO UTILITY DISTRICT. LUD WILL ORDER METERS UPON RECEIPT OF PAYMENT AND FURNISH METERS TO THE CONTRACTOR. CONTRACTOR WILL BE REQUIRED TO PICK UP THE METERS AT LUD OFFICE.

VALVE BOX
 PRECAST CONCRETE VALVE BOX
 57" x 27" x 32" DEEP
 OLDCASTLE OR EQUAL
 CONCRETE: 5000 PSI @ 28 DAYS
 REINFORCING: #4 BAR @ 12" C/C E.W.

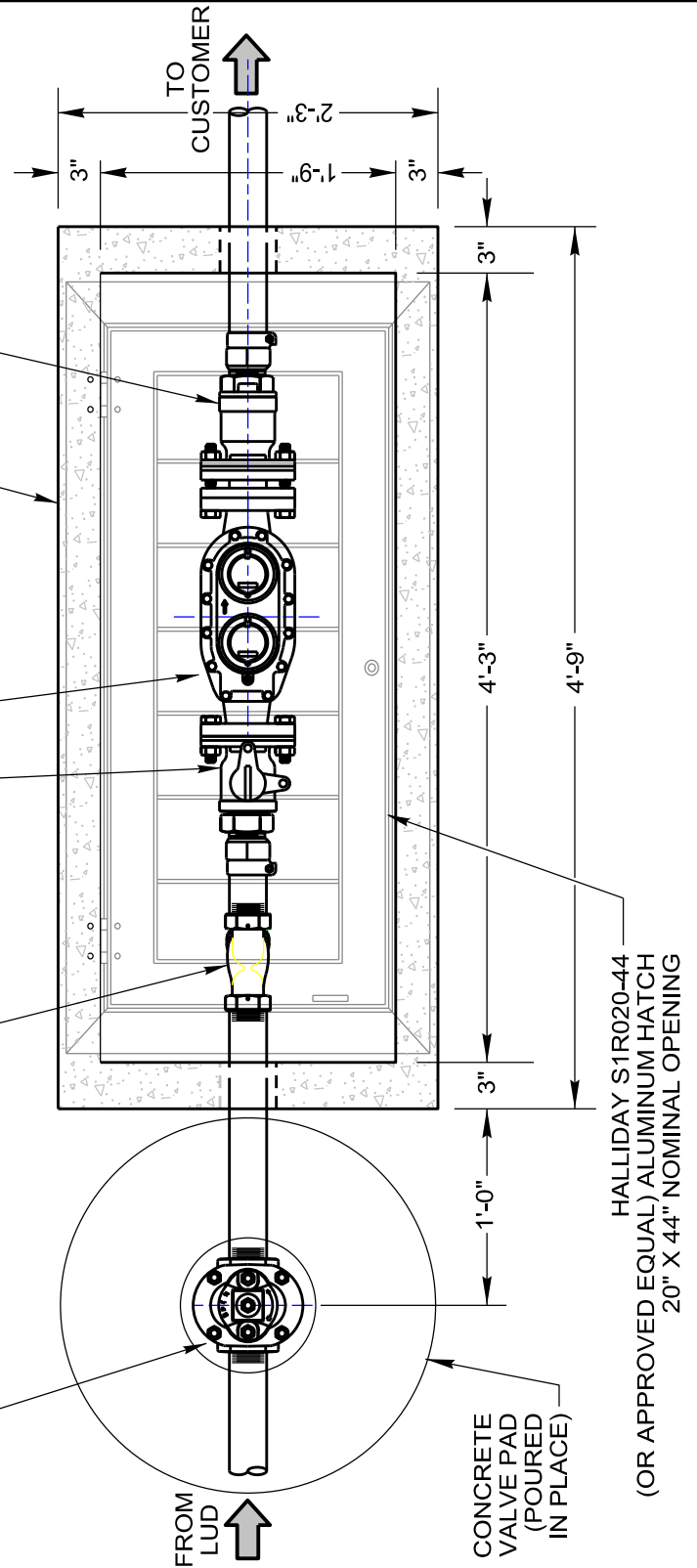
2" TRU/FLO COMPOUND
 METER RADIO READ
 (FLANGED)

FORD METER
 SETTER

ANGLE CHECK
 VALVE

2" THREADED
 GATE VALVE
 w/ VALVE BOX

2" WYE - PATTERN
 STRAINER (THREADED)



HALLIDAY S1R020-44
 (OR APPROVED EQUAL) ALUMINUM HATCH
 20" X 44" NOMINAL OPENING

REVISIONS	DATE

2" DOMESTIC METER ASSEMBLY PLAN

 **LaGuardo**
 UTILITY DISTRICT
 LEBANON, TENNESSEE

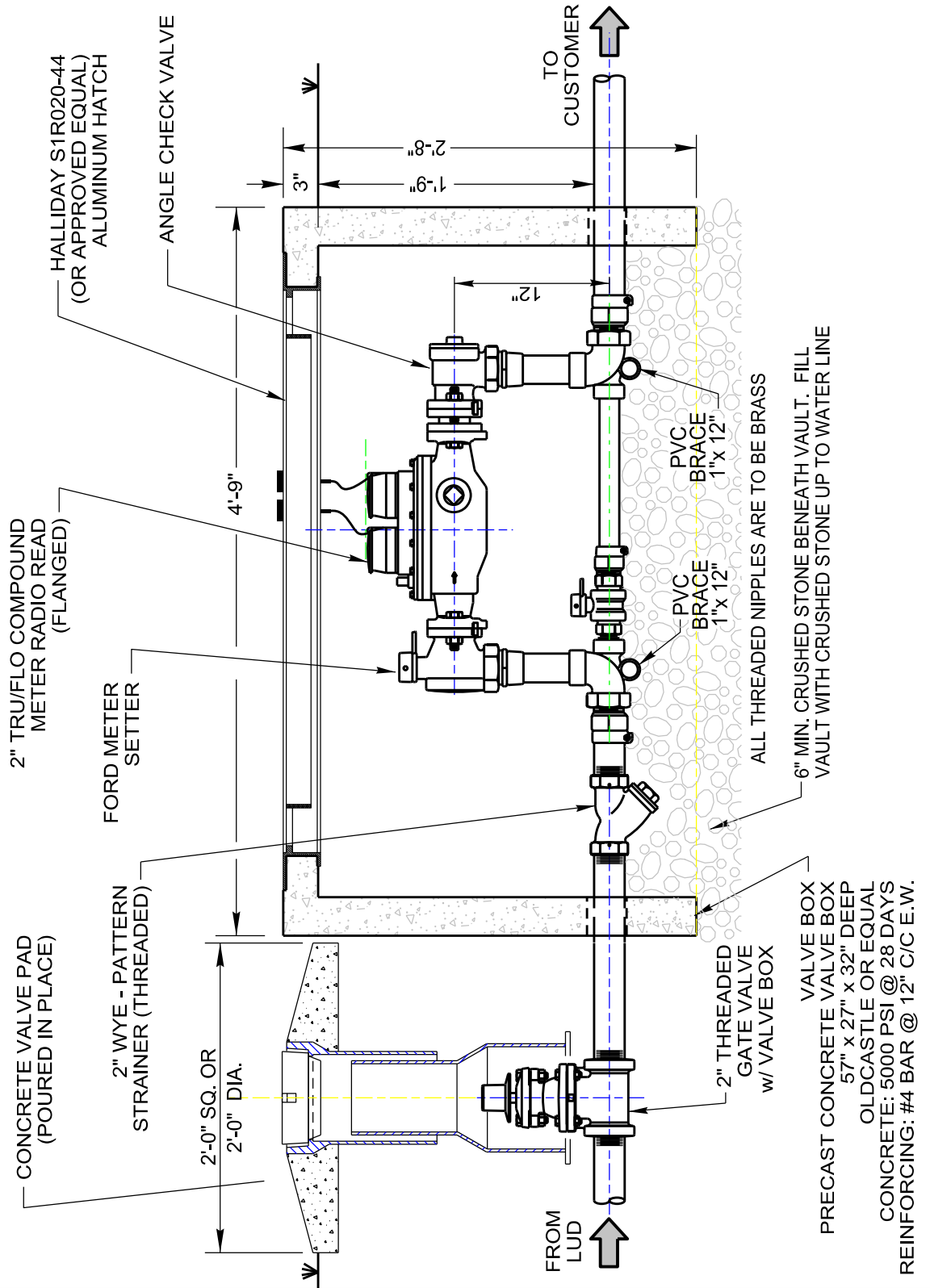
DRAWING NUMBER

WD-002A

DATE: 09/27/2019

2" METER GENERAL NOTE

CONTRACTOR SHALL PAY THE FEE COST OF ALL THE NEW 2-INCH METERS. METER FEE SHALL BE PAID TO LAGUARDO UTILITY DISTRICT. LUD WILL ORDER METERS UPON RECEIPT OF PAYMENT AND FURNISH METERS TO THE CONTRACTOR. CONTRACTOR WILL BE REQUIRED TO PICK UP THE METERS AT LUD OFFICE.



REVISIONS

DATE

2" DOMESTIC METER ASSEMBLY ELEVATION

 **LaGuardo**
UTILITY DISTRICT
LEBANON, TENNESSEE

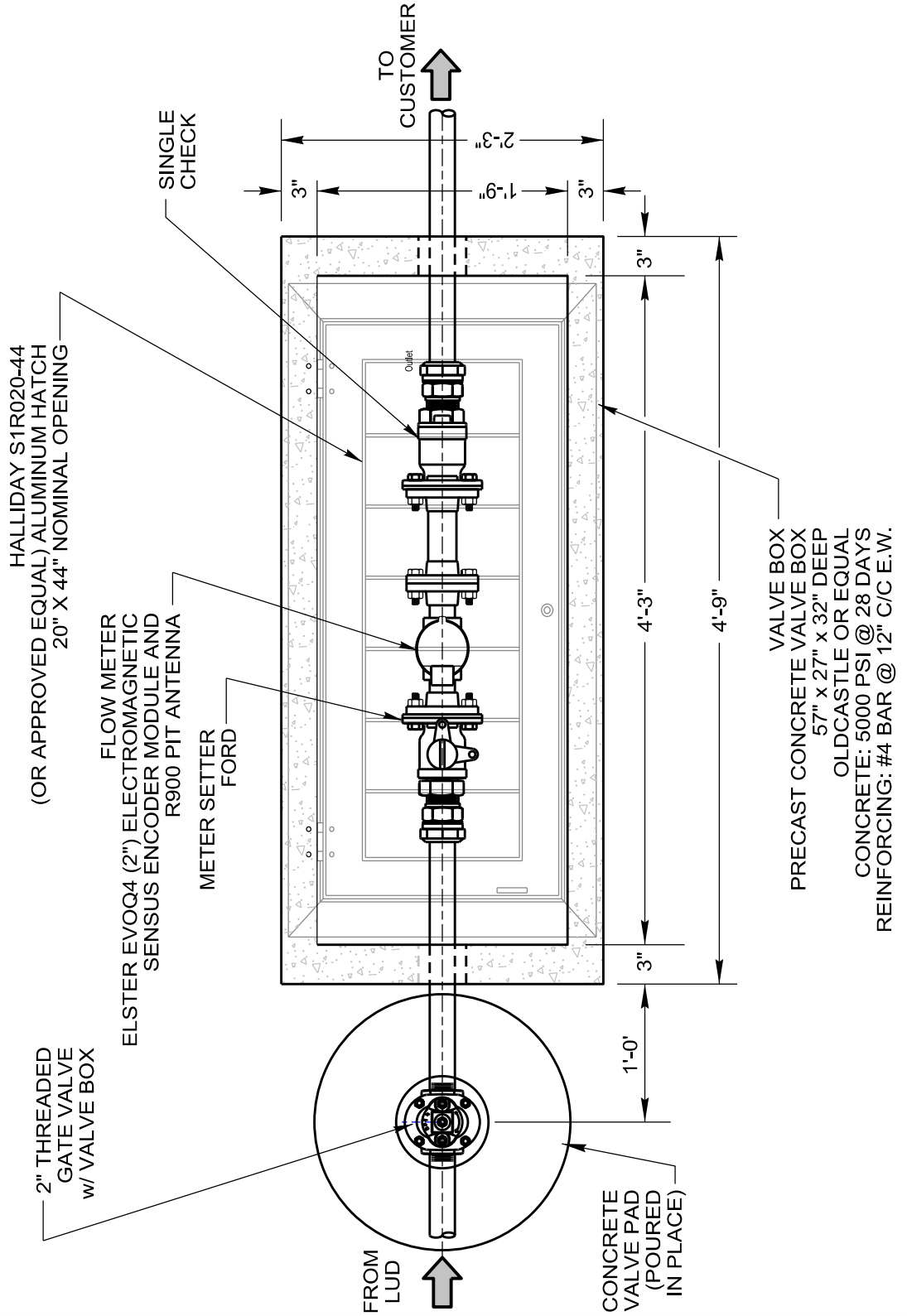
DRAWING NUMBER

WD-002B

DATE: 09/27/2019

2" METER GENERAL NOTE

CONTRACTOR SHALL PAY THE FEE COST OF ALL THE NEW 2-INCH METERS. METER FEE SHALL BE PAID TO LAGUARDO UTILITY DISTRICT. LUD WILL ORDER METERS UPON RECEIPT OF PAYMENT AND FURNISH METERS TO THE CONTRACTOR. CONTRACTOR WILL BE REQUIRED TO PICK UP THE METERS AT LUD OFFICE.



REVISIONS

DATE

2" IRRIGATION METER ASSEMBLY PLAN

 **LaGuardo**
UTILITY DISTRICT
LEBANON, TENNESSEE

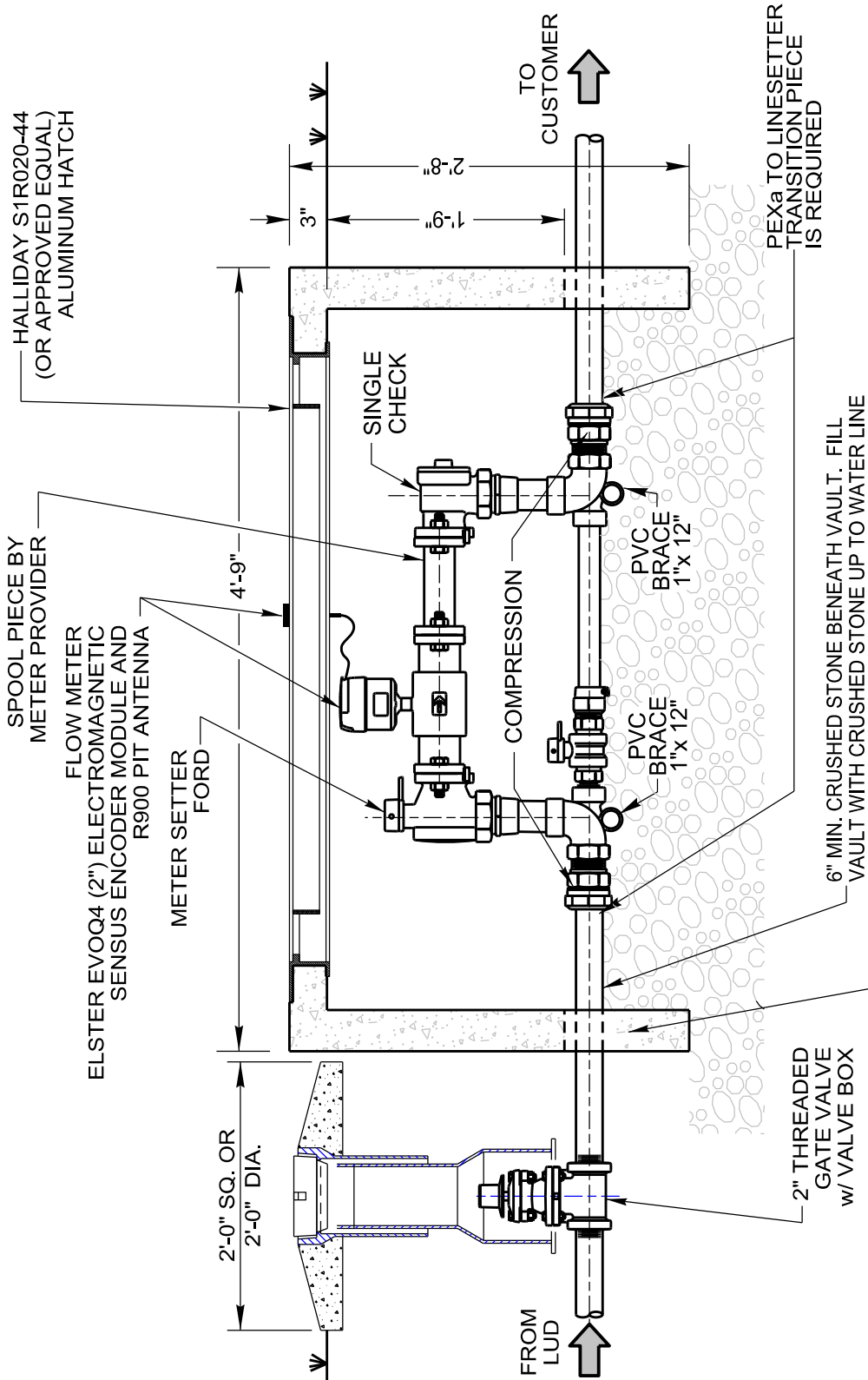
DRAWING NUMBER

WD-002C

DATE: 09/27/2019

2" METER GENERAL NOTE

CONTRACTOR SHALL PAY THE FEE COST OF ALL THE NEW 2-INCH METERS. METER FEE SHALL BE PAID TO LAGUARDO UTILITY DISTRICT. LUD WILL ORDER METERS UPON RECEIPT OF PAYMENT AND FURNISH METERS TO THE CONTRACTOR. CONTRACTOR WILL BE REQUIRED TO PICK UP THE METERS AT LUD OFFICE.



REVISIONS

DATE

2" IRRIGATION METER ASSEMBLY ELEVATION

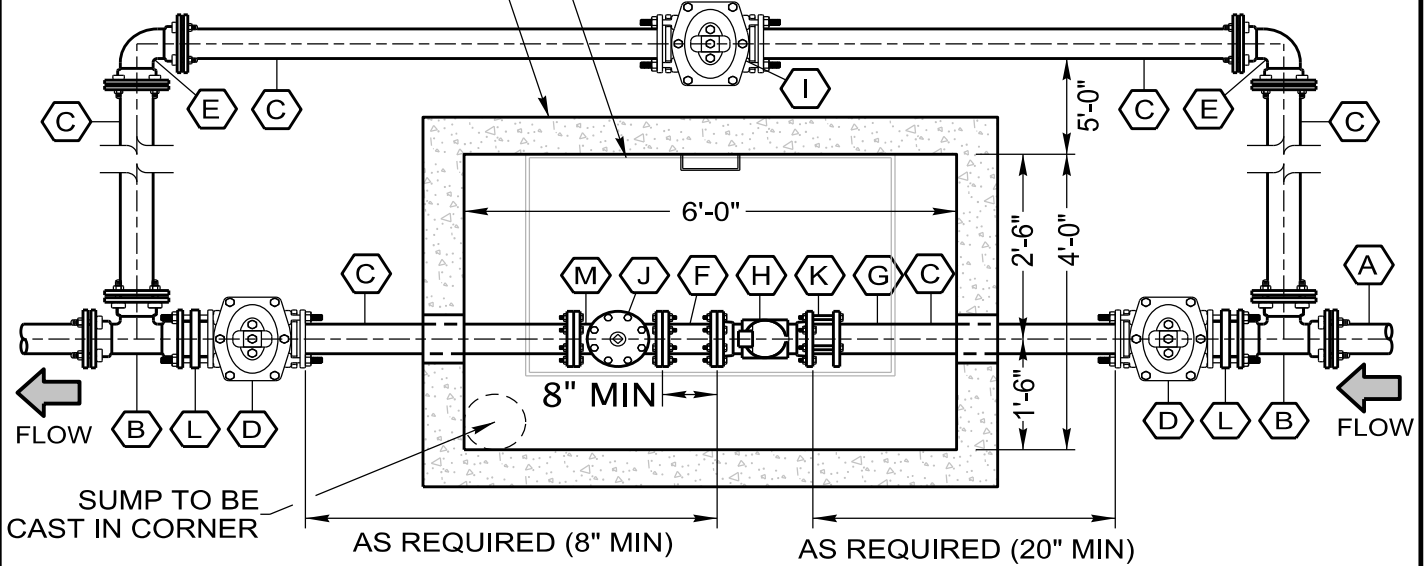
 **LaGuardo**
UTILITY DISTRICT
LEBANON, TENNESSEE

DRAWING NUMBER

WD-002D

DATE: 09/27/2019

METER VAULT SHALL BE A 4'x6'x4' PRECAST METER VAULT BY CLOUD CONCRETE PRODUCTS OR APPROVED EQUAL, PER THE DISTRICT'S STANDARDS. PROVIDE 2" SCH. 40 PVC. DRAIN TO DAYLIGHT OR SUMP WITH SUMP PUMP AND DISCHARGE PIPING TO DAYLIGHT. 30"x42" HALLIDAY ALUMINUM ACCESS HATCH, MODEL W1C3042, CENTERED OVER STEPS, WITH PROVISIONS FOR LOCKING.



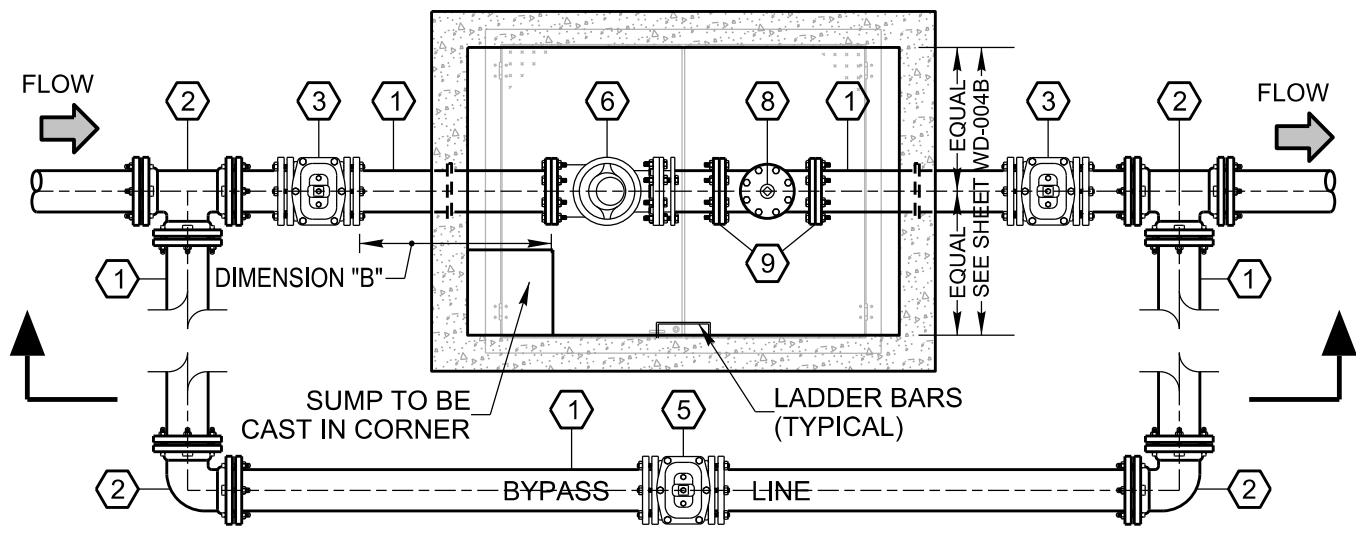
BACKFLOW PREVENTER NOTE:

ALL METERS MUST HAVE REDUCED PRESSURE BACKFLOW PREVENTER PER L.U.D. REQUIREMENTS INSTALLED DOWNSTREAM OF THE METER. BACKFLOW PREVENTERS MAY BE INSTALLED WITHIN BUILDINGS IN A HORIZONTAL POSITION IF DESIRED. OUTDOOR BACKFLOW PREVENTERS MUST BE INSTALLED ABOVEGROUND IN HEATED ENCLOSURES MOUNTED ON CONCRETE PADS PER THE MANUFACTURER'S REQUIREMENTS.

NO CONNECTIONS ARE ALLOWED TO PUBLIC WATER LINE BETWEEN THE METER AND THE BACKFLOW PREVENTER.

(A)	4" DUCTILE IRON PIPE, MJ, THK. CL 52, TO WATER MAIN
(B)	4" x 4" MECHANICAL JOINT TEE
(C)	4" DUCTILE IRON PIPE, MJ, THK. CL 52
(D)	4" GATE VALVE w/ BOX, MJ
(E)	4" 90° ELBOW, MJ
(F)	4" DUCTILE IRON PIPE, FL x FL, THK. CL 52
(G)	4" DUCTILE IRON PIPE, FL x MJ, THK. CL 52
(H)	4" ELSTER EVOQ4 METER
(I)	4" POST INDICATOR VALVE, MJ, WITH INTEGRAL PROVISIONS FOR LOCKING (PAINTED RED)
(J)	2" TAP WITH BALL VALVE FOR METER TESTING PURPOSES
(K)	4" EPOXY COATED DISMANTLING JOINT
(L)	4" MJ FOSTER ADAPTER
(M)	4" x 4" FLANGED TEE WITH 4" BLIND FLANGED TAPPED WITH 2" BALL VALVE

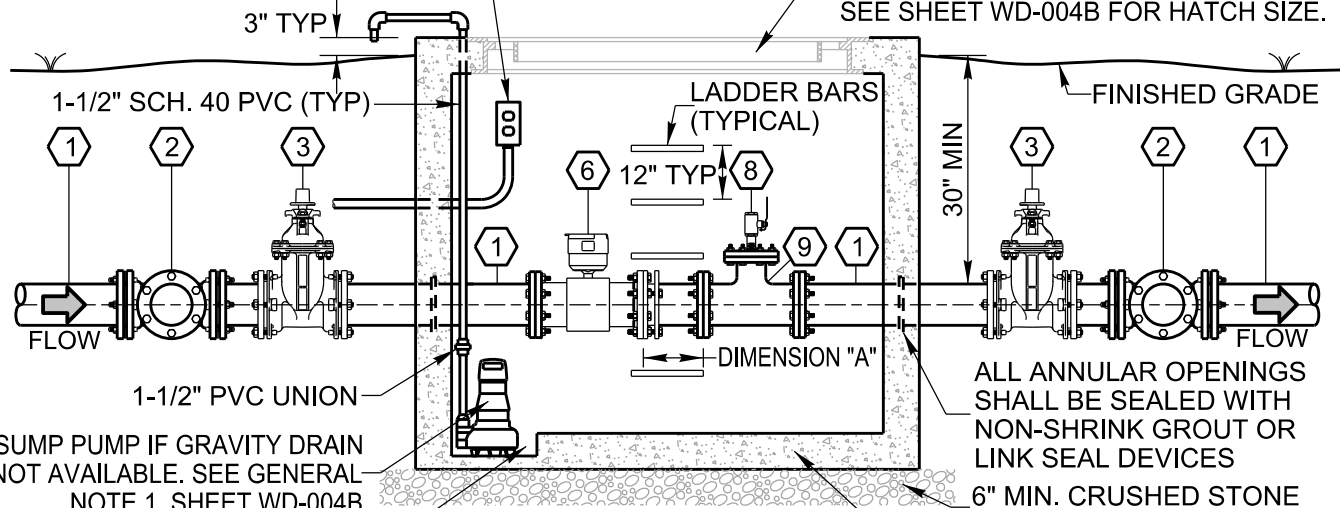
REVISIONS	DATE	<h2 style="text-align: center;">4" DOMESTIC METER ASSEMBLY</h2>	



PLAN
NOT TO SCALE

GFCI DUPLEX RECEPTACLE FOR SUMP PUMP POWER. SEE GENERAL NOTE 1, SHEET WD004B

DOUBLE-LEAF HALLIDAY ALUMINUM ACCESS HATCH CENTERED OVER METER, WITH PROVISIONS FOR LOCKING. SEE SHEET WD-004B FOR HATCH SIZE.



SECTION
NOT TO SCALE

BACKFLOW PREVENTER NOTE:

ALL METERS MUST HAVE REDUCED PRESSURE BACKFLOW PREVENTER PER L.U.D. REQUIREMENTS INSTALLED DOWNSTREAM OF THE METER. BACKFLOW PREVENTERS MAY BE INSTALLED WITHIN BUILDINGS IN A HORIZONTAL POSITION IF DESIRED, AS LONG AS THEY ARE WITHIN 100' OF THE METER. OUTDOOR BACKFLOW PREVENTERS MUST BE INSTALLED ABOVEGROUND IN HEATED ENCLOSURES MOUNTED ON CONCRETE PADS PER THE MANUFACTURER'S REQUIREMENTS.

NO CONNECTIONS ARE ALLOWED TO PUBLIC WATER LINE BETWEEN THE METER AND THE BACKFLOW PREVENTER.

REVISIONS	DATE

**6" AND 8" DOMESTIC METER ASSEMBLY
PLAN AND SECTION**



DRAWING NUMBER
WD-004A
DATE: 09/27/2019

<u>LINE SIZE</u>	<u>MIN. INSIDE VAULT SIZE</u>	<u>HATCH SIZE</u>	<u>DIMENSION "A" (MIN)</u>	<u>DIMENSION "B" (MIN)</u>
6"	4' x 6' x 5' DEEP	60" x 48"	12" (2 PIPE DIA.)	30" (5 PIPE DIA.)
8"	6' x 8' x 6' DEEP	72" x 48"	16" (2 PIPE DIA.)	40" (5 PIPE DIA.)

DEVICE AND FITTING SCHEDULE

NO.	DESCRIPTION
①	CL. 52 DIP
②	DI MJ TEE
③	GATE VALVE WITH VALVE BOX
④	90° DI MJ BEND
⑤	POST INDICATOR VALVE
⑥	ELSTER EVOQ4 FULL FLOW RADIO READ METER ASSEMBLY, COMPLETE.
⑦	FLANGED COUPLING ADAPTER / DISMANTLING JOINT
⑧	2" TAP W/ 2" BALL VALVE FOR METER TESTING PURPOSES
⑨	4" BRANCH DI FLANGED TEE WITH 4" BLIND FLANGE TAPPED FOR 2" COPPER

1. ALL FITTINGS AND VALVES TO INCLUDE MECHANICAL RESTRAINT DEVICES.
2. ALL FITTINGS, DEVICES, AND VALVES SHALL BE SAME NOMINAL SIZE AS METER (I.E. 6" PIPE FOR 6" METER, 8" PIPE FOR 8" METER, ETC.)

GENERAL NOTES:

1. THE CONCRETE VAULT FOR THE MASTER METER ASSEMBLY SHALL BE FURNISHED WITH A CAST IN PLACE ACCESS HATCH AS SPECIFIED HEREON. IF A POSITIVE, ADEQUATELY SIZED DRAIN TO DAYLIGHT CANNOT BE PROVIDED DIRECTLY FROM THE VAULT, A SUMP SHALL BE CAST INTO THE BASE OF THE VAULT, AND THE VAULT INSTALLATION SHALL BE COMPLETE WITH A SUMP PUMP SET AS REQUIRED, WITH PIPED DISCHARGE TO DAYLIGHT AT AN APPROVED LOCATION. SUMP PUMP SHALL BE A ZOELLER MODEL 63 (OR APPROVED EQUAL). 0.3 HP, 110 VAC, 1Ø, AUTOMATIC, 10' UL LISTED CORD WITH 3-WIRE GROUNDED PLUG, 1-1/2" DISCHARGE, 14 GPM @ 20' HEAD.

2. IT SHALL BE THE OWNER'S / DEVELOPER'S RESPONSIBILITY TO MEET AND PROVIDE ANY AND ALL POWER REQUIREMENTS ASSOCIATED WITH THE SUMP PUMP IN THE MASTER METER VAULT, IF APPLICABLE. AT A MINIMUM A GFCI DUPLEX RECEPTACLE ON A 20 AMP DEDICATED CIRCUIT MOUNTED IN A WEATHERPROOF ENCLOSURE WITH WHILE-IN-USE COVER SHALL BE PROVIDED FOR THE SUMP PUMP. IN NO CASE SHALL THE LAGUARDO UTILITY DISTRICT BE RESPONSIBLE FOR PROVIDING POWER TO THESE INSTALLATIONS.

3. COORDINATE ALL WORK AS SHOWN HEREON WITH THE LAGUARDO UTILITY DISTRICT, INCLUDING CONNECTIONS TO EXISTING OR PROPOSED LINES AND THE CONSTRUCTION OF THE PUBLIC IMPROVEMENTS, IF APPLICABLE.

4. FOR THE PUBLIC PORTION OF THE PROPOSED FIRE LINE, ALL PIPING SHALL BE NEW DUCTILE IRON PIPE, AWWA THICKNESS CLASS 52, AND ALL MECHANICAL JOINT FITTINGS SHALL BE NEW DUCTILE IRON FITTINGS WITH MEGA-LUG GLANDS.

5. ALL VALVES WITH MECHANICAL JOINTS SHALL HAVE MEGA LUG GLANDS.


6. FOR CLARITY, PIPING AND METER SUPPORTS HAVE NOT BEEN SHOWN HEREON. THE CONTRACTOR SHALL BE SOLELY RESPONSIBLE FOR FURNISHING AND INSTALLING ALL REQUIRED SUPPORTS.

7. THE TAP FOR METER TESTING PURPOSES (ITEM 8 AT LEFT) SHALL INCLUDE A 2" TAP AND CORPORATION STOP WITH A 2"x6" BRASS SPOOL PIECE, THREADED ON BOTH ENDS TO FACILITATE CONNECTION OF THE METER TESTING APPARATUS. COORDINATE WITH THE LAGUARDO UTILITY DISTRICT.

8. THE INTERNAL TO THE CONCRETE METER VAULT SHALL HAVE AN INTEGRAL DISMANTLING JOINT, SMITH-BLAIR MODEL 975. FOR CLARITY THE DISMANTLING JOINT HAS NOT BEEN SHOWN HEREON.

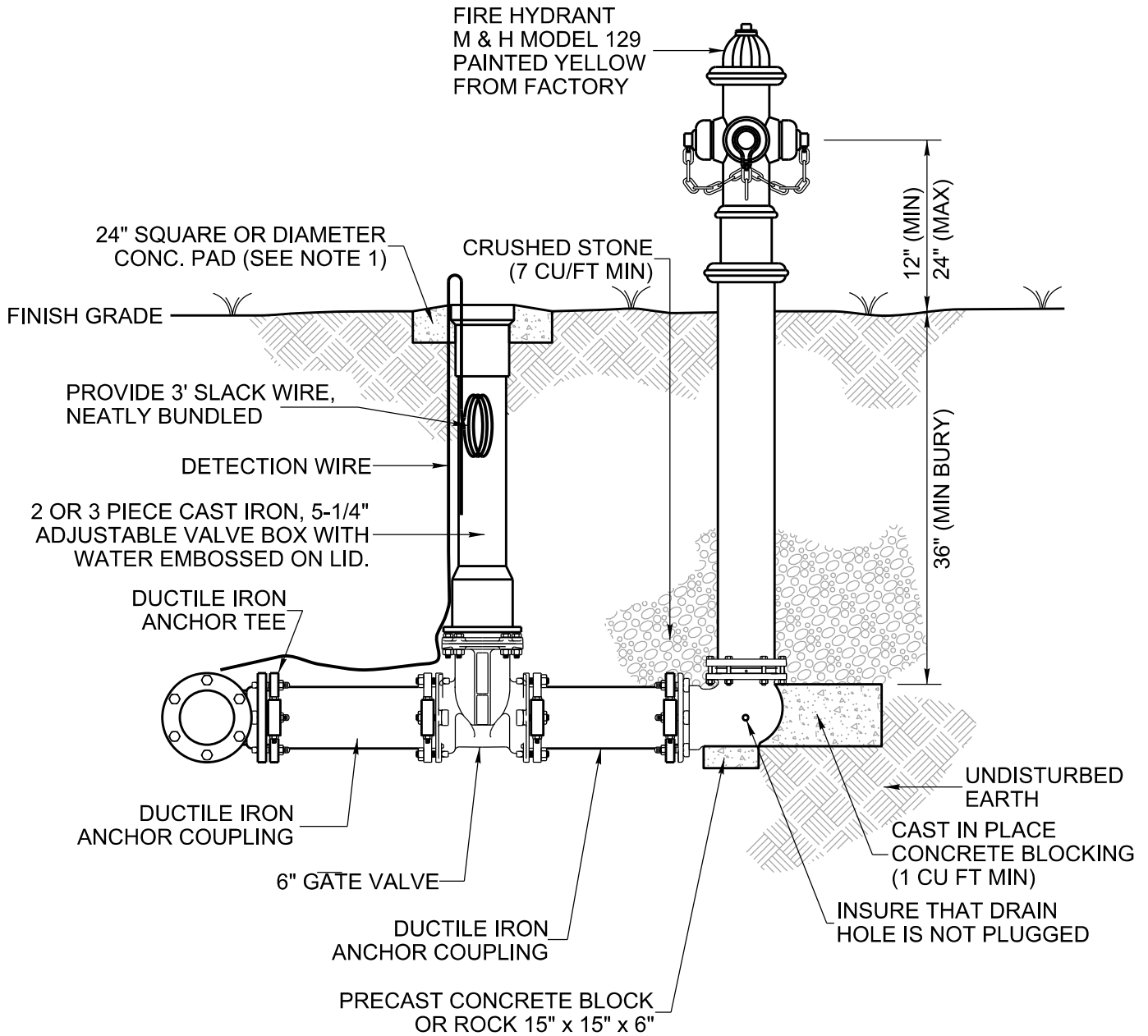
NOT TO SCALE

SEE SHEET WD-004A FOR VAULT PLAN AND SECTION

REVISIONS	DATE	<h3>6" AND 8" DOMESTIC METER ASSEMBLY GENERAL NOTES AND DEVICE LISTING</h3>	
		 <p>LaGuardo UTILITY DISTRICT</p>	DRAWING NUMBER
			WD-004B
		LEBANON, TENNESSEE	DATE: 09/27/2019

NOTES:

1. CONCRETE PAD SHALL BE POURED IN PLACE. PRECAST NOT ACCEPTABLE.
2. OPERATING NUT, OPENING DIRECTION, CAP NUTS, THREAD AND CONNECTIONS MUST BE APPROVED IN WRITING BY THE OWNER AS CONFORMING TO HIS STANDARDS.



REVISIONS	DATE	FIRE HYDRANT SETTING DETAIL	
		 <p>LaGuardo UTILITY DISTRICT LEBANON, TENNESSEE</p>	DRAWING NUMBER
			WD-005
			DATE: 09/27/2019